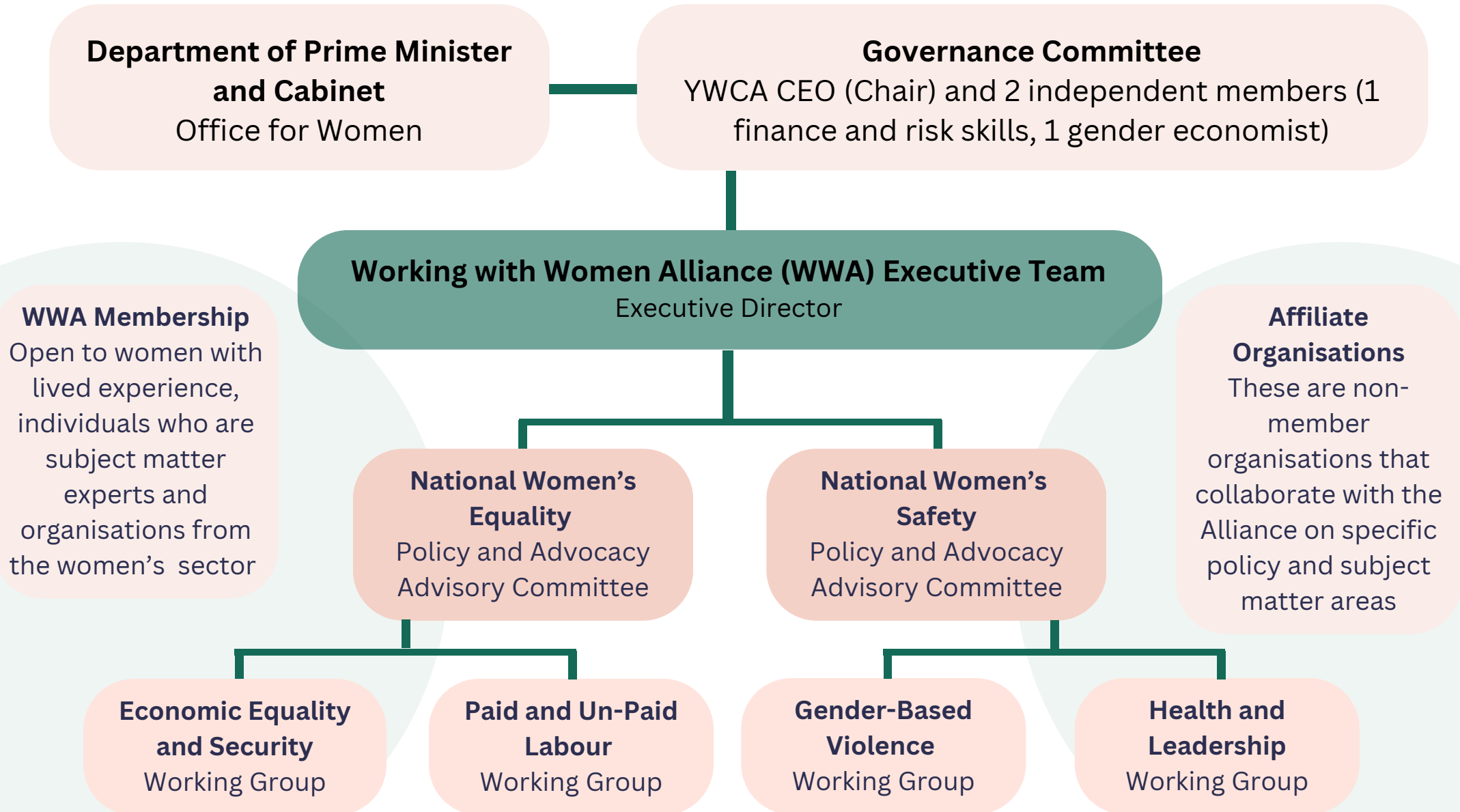




Working with Women Alliance

Governance Structure





Working with
Women Alliance

Organisational Structure

Department of Prime Minister and Cabinet
Office for Women

Governance Committee
YWCA CEO (Chair), and 2 independent members (1 finance and risk skills,
1 gender economist)

Katherine Berney
Executive Director
Working with Women Alliance

Federal Policy Advisor

National Women's Equality Director

**Senior Communications
Officer**

Policy Officer

Diversity, Equality and Inclusion Policy Officer



Working with Women Alliance

How our consultation process enables the voices of our members

1. Consultation Triggers

- WWA priorities developed by the National Women’s Safety and National Women’s Equality Policy and Advocacy Advisory Committees
- Priority areas outlined in Working for Women: A Strategy for Gender Equality
- Emerging social and policy issues
- Government requests and submissions

2. Analysis

- Policy and best-practice analysis.
- Analysis through gendered and intersectional lens, evaluating how policies affect individuals differently based overlapping identities, such as race, gender, class, and ethnicity.

3. Consultation

- Policy and Advocacy Advisory Committees
- NWSA and NWEA Working Groups
- Members

4. Writing and drafting

5. Decision

6. Submissions

- Reports
- Policy Submissions
- Inquiries

7. Evaluation

- Evaluation of process and outcomes by Policy and Advocacy Advisory Committees